

Kelly Klosure's Trussed Roof System can be installed on a simple rigid frame support structure to create canopies, roof systems and buildings with one or more open walls.

Kelly's roof systems can be designed with two basic structure types:

- Simple eave support columns and beams where the column foundations resist lateral (wind) loads.
- Full rigid frames with simpler foundation requirements and the ability to resist high seismic loads.

Roof System Standard Features:

- 2:12 Pitch Trussed Roof (Up to 24' Wide)
- 4:12 Pitch Trussed Roof (Up to 54' Wide)
- Red Primer Finish on All Structural Steel
- Galvalume or Painted Roof and Trim Finish
- Hot-Rolled Wide Flange Beam and Square Tube Column Support Structure
- Easy Bolt-Together Installation

Optional Features:

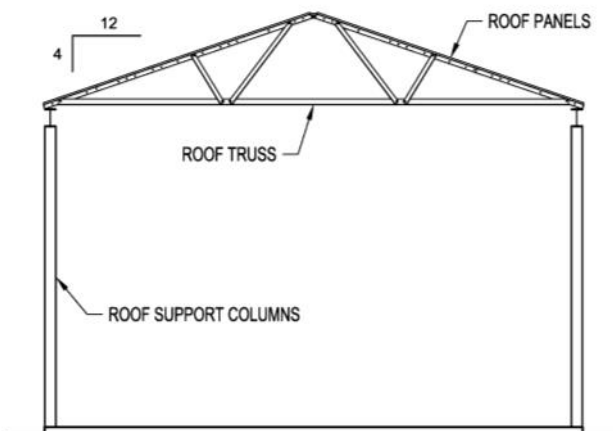
- Hot-Dip Galvanized Structural Steel and Panel Frames for Superior Corrosion Resistance



Canopy at County of Henrico, VA Maintenance Yard



Passenger Walkway Cover
at Pittsburgh International Airport



Canopy Cross Section with
Simple Eave Support Columns & Beams



Water Point Canopy at Fort Devens, MA