

PRELIMINARY DRAWINGS

FOR A 42'W X 13'H EAVE X 42'L KELLY KLOSURE BUILDING

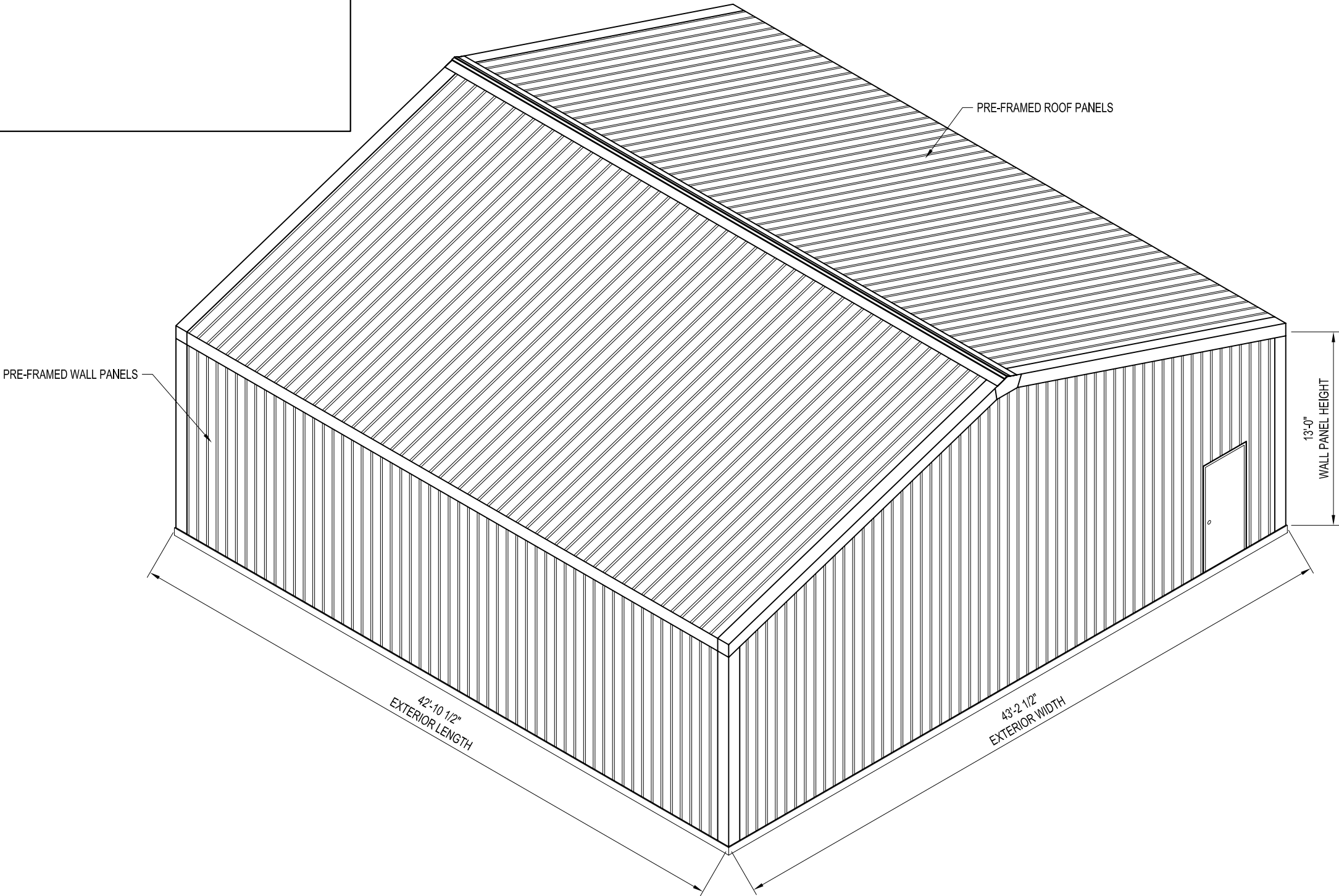
PROJECT:

BUYER:  
PURCHASE ORDER:  
KELLY ORDER:



NOT FOR CONSTRUCTION

REVISION	DATE	COMMENT



P/N: KK424213

PROJECT TITLE:  
42'W X 13'H EAVE X 42'L  
P/N: KK424213

BUYER:

K.K. ORDER NUMBER:

BUYER P.O. NUMBER:

DRAWN BY:  
ALEX CARSTENS

DATE:  
1/24/11

APPROVED BY:

DATE:

REVISION:

DATE:

SCALE:  
NOT TO SCALE

K.K. QUOTE NUMBER:

PAGE TITLE:  
COVER PAGE

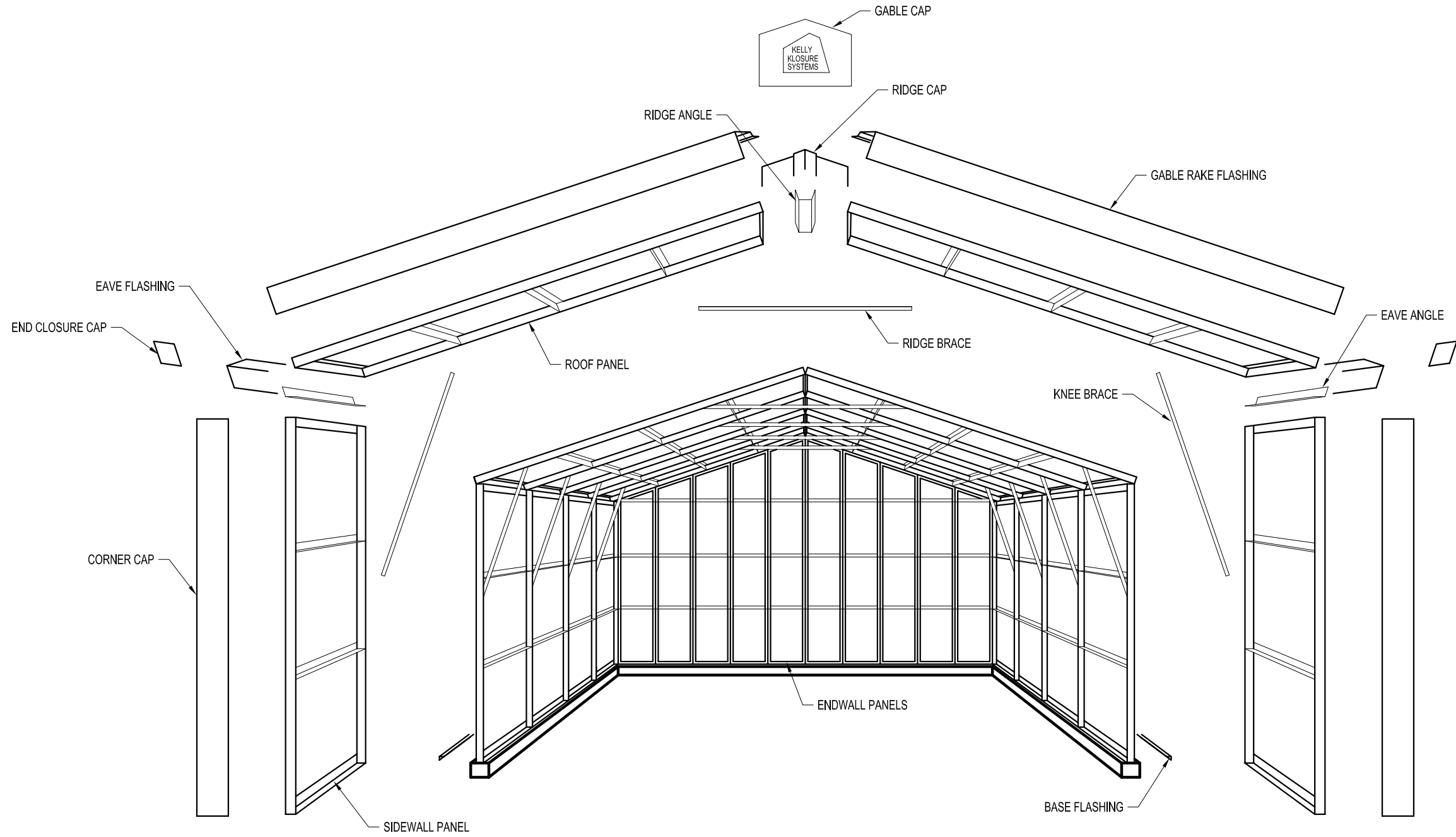
SHEET 1 OF 8

PROPRIETARY INFORMATION  
THIS DRAWING & THE DESIGN IT COVERS ARE THE EXCLUSIVE PROPERTY OF KELLY GROUP, INC. OF NEW JERSEY. NO PART OF THIS DRAWING OR THE DESIGN IT COVERS MAY BE REPRODUCED OR TRANSMITTED IN ANY FORM OR BY ANY MEANS, ELECTRONIC OR MECHANICAL, INCLUDING PHOTOCOPYING, RECORDING, OR BY ANY INFORMATION STORAGE AND RETRIEVAL SYSTEM, WITHOUT THE WRITTEN PERMISSION OF KELLY GROUP, INC. OF NEW JERSEY. THE USER OF THIS DRAWING AGREES TO HOLD KELLY GROUP, INC. OF NEW JERSEY HARMLESS FROM ANY AND ALL CLAIMS, DAMAGES, LOSSES AND EXPENSES, INCLUDING REASONABLE ATTORNEY'S FEES, THAT MAY BE ASSERTED AGAINST KELLY GROUP, INC. OF NEW JERSEY OR ITS AGENTS, EMPLOYEES, OR SUBSIDIARIES, ARISING OUT OF OR RESULTING FROM THE USE OF THIS DRAWING.

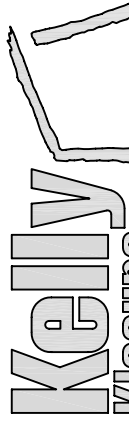
EASY TO ASSEMBLE PANEL  
SYSTEMS FOR RELOCATABLE  
ENCLOSURES FROM WEATHER  
BARRIERS TO BUILDINGS

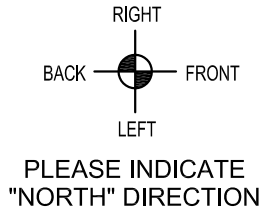
Mfg. by Kelly Group, Inc.  
P.O. Box 1058 Fremont, NE 68026  
Phone: 800-228-7230 Fax: 402-727-1363 Web: [www.kellyklosure.com](http://www.kellyklosure.com)

NOT FOR CONSTRUCTION



## BASIC BUILDING COMPONENTS

DRAWN BY: ALEX CARSTENS		PROJECT TITLE: 42"W X 13"H EAVE X 42"L P/N: KK424213		PAGE TITLE: BASIC BUILDING COMPONENTS		 <b>EASY TO ASSEMBLE PANEL SYSTEMS FOR RELOCATABLE ENCLOSURES FROM WEATHER BARRIERS TO BUILDINGS</b>  Mfg. by Kelly Group, Inc. P.O. Box 1058 Fremont, NE 68026 Phone: 800-228-7230 Fax: 402-727-1363 Web: www.kellyklosure.com
DATE: 1/24/11				SHEET 2 OF 8		
APPROVED BY:				PROPRIETARY INFORMATION <small>THIS DRAWING &amp; THE DESIGN IT COVERS ARE THE EXCLUSIVE PROPERTY OF KELLY GROUP, INC. OF NE. THEY ARE PROVIDED ONLY ON THE USER'S EXPRESS AGREEMENT THAT THEY WILL NOT BE REPRODUCED OR TRANSMITTED IN ANY FORM OR BY ANY MEANS, ELECTRONIC OR MECHANICAL, WITHOUT THE EXPRESS WRITTEN PERMISSION OF KELLY GROUP, INC. OF NE. TO THE USER OR THEIR AGENTS. KELLY GROUP, INC. OF NE. MAKES NO REPRESENTATION REGARDING DRAWING SCALE &amp; ACCURACY.</small>		
DATE:		BUYER:				
DATE:						
SCALE: NOT TO SCALE						
K.K. QUOTE NUMBER:		K.K. ORDER NUMBER:		BUYER P.O. NUMBER:		

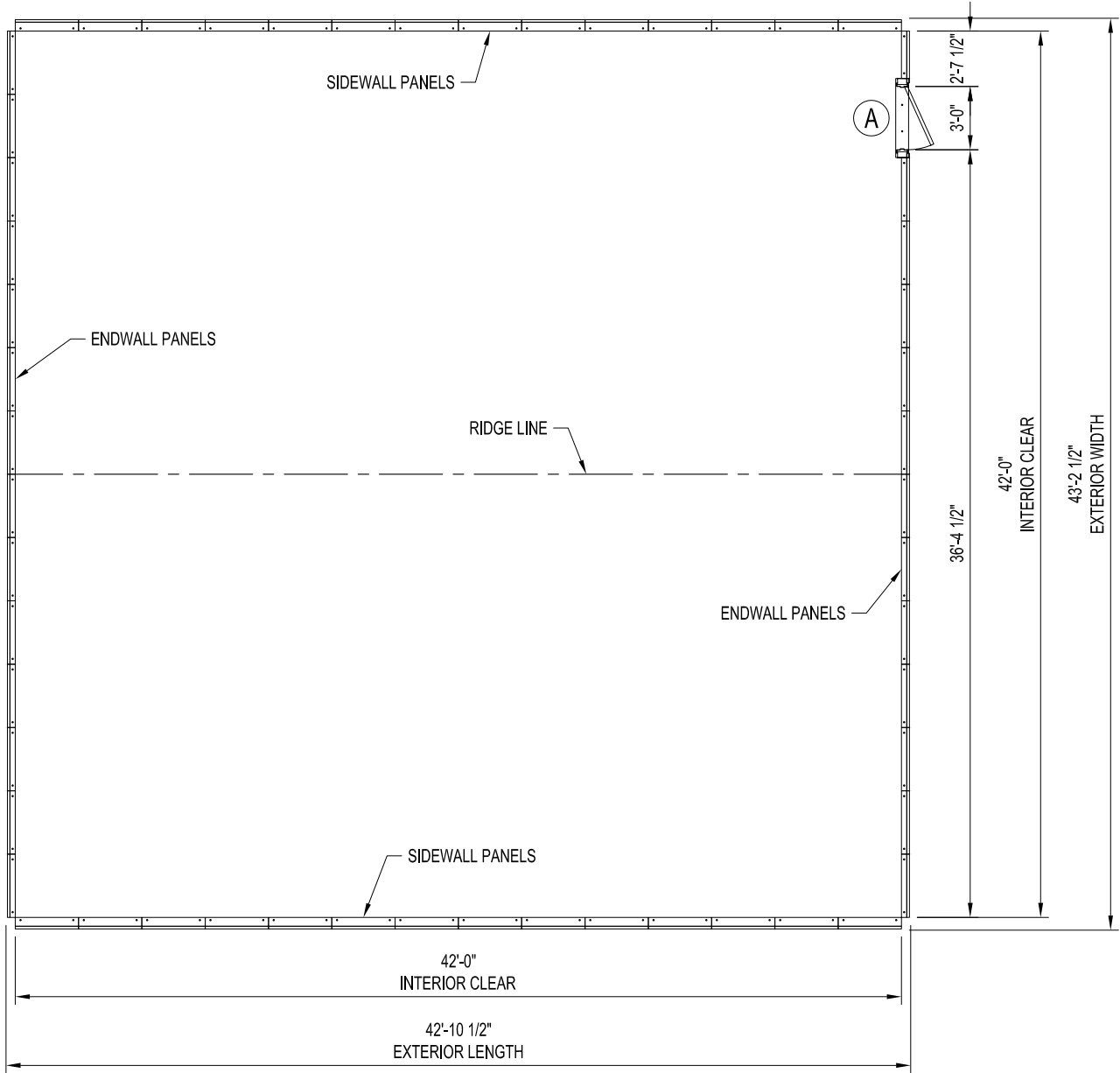


← START BUILDING  
ASSEMBLY AT THIS END  
(LEFT ENDWALL)

WORK IN  
THIS DIRECTION  
→

*IMPORTANT NOTE: DIRECTION OF ASSEMBLY WILL AFFECT  
MANUFACTURING OF THE BUILDING!*

CHANGING DIRECTION OF ASSEMBLY AFTER  
MANUFACTURING MAY MAKE ASSEMBLY MORE DIFFICULT!  
IF BUILDING IS TO BE ASSEMBLED FROM THE RIGHT END  
DUE TO SITE CONDITIONS, PLEASE INDICATE ABOVE!



PLAN VIEW

DOOR SCHEDULE	
MARK NO.	DESCRIPTION
A	3'-0"W X 7'-0"H PERSONNEL DOOR (SWING AS SHOWN ON PLAN VIEW)

**NOTE:**  
BUILDING LENGTH MAY BE INCREASED IN 3'-0"  
INTERVALS BY PURCHASING THE APPROPRIATE  
3'-0" EXTENSION KIT AT THE SAME TIME OF  
PURCHASE AS THE BASE BUILDING.

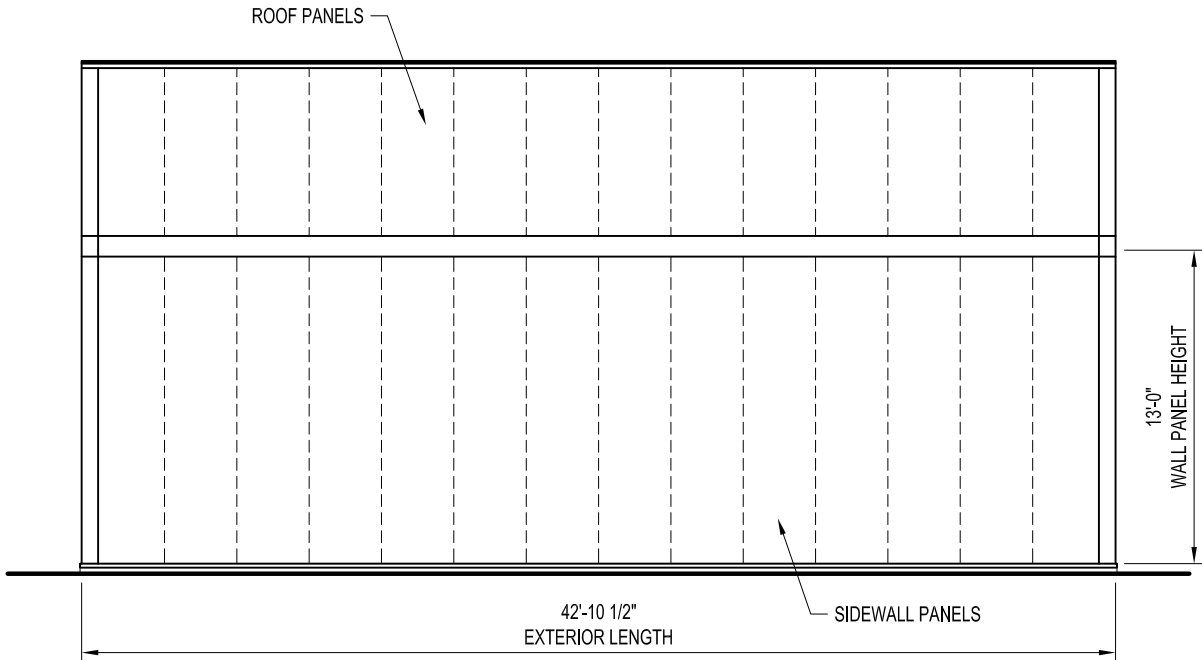
NOT FOR CONSTRUCTION

DRAWN BY: ALEX CARSTENS	PROJECT TITLE: 42"W X 13"H EAVE X 42"L P/N: KK424213		PAGE TITLE: PLAN VIEW	
	DATE: 1/24/11	APPROVED BY: DATE:	REVISION: DATE:	SCALE: 1/8" = 1'-0"
K.K. QUOTE NUMBER:		BUYER:		BUYER P.O. NUMBER:
K.K. ORDER NUMBER:		K.K. ORDER NUMBER:		BUYER P.O. NUMBER:

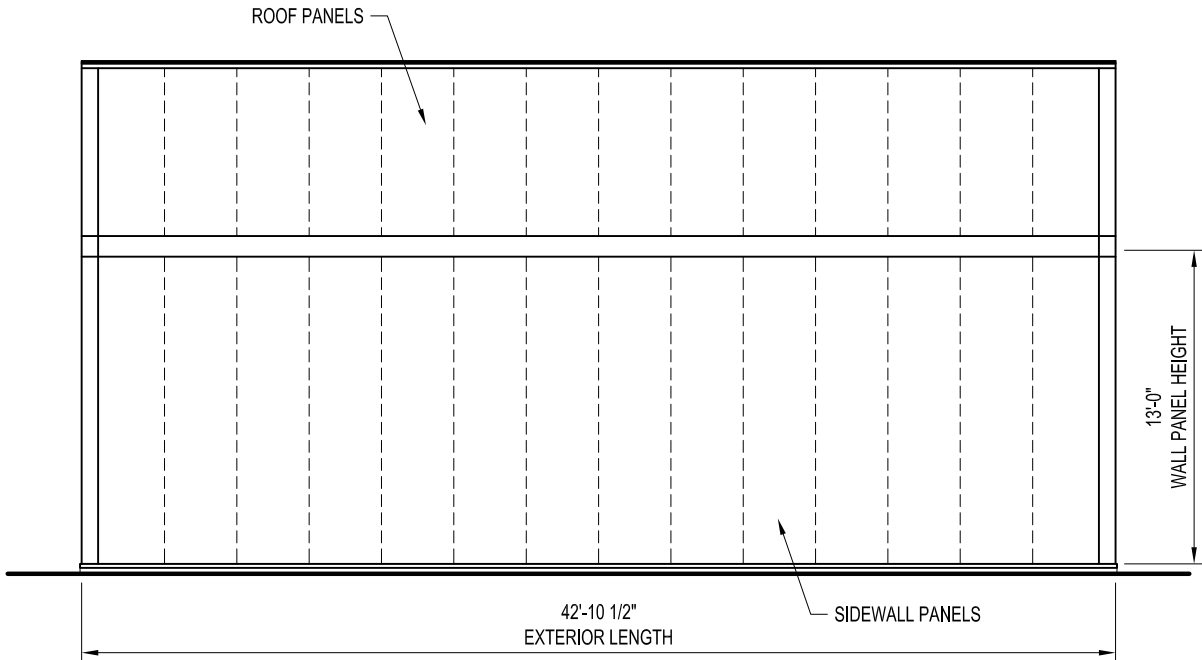
EASY TO ASSEMBLE PANEL  
SYSTEMS FOR RELOCATABLE  
ENCLOSURES FROM WEATHER  
BARRIERS TO BUILDINGS

Mfg. by Kelly Group, Inc.  
P.O. Box 1058 Fremont, NE 68026  
Phone: 800-228-7230 Fax: 402-727-1363 Web: www.kellyklosure.com

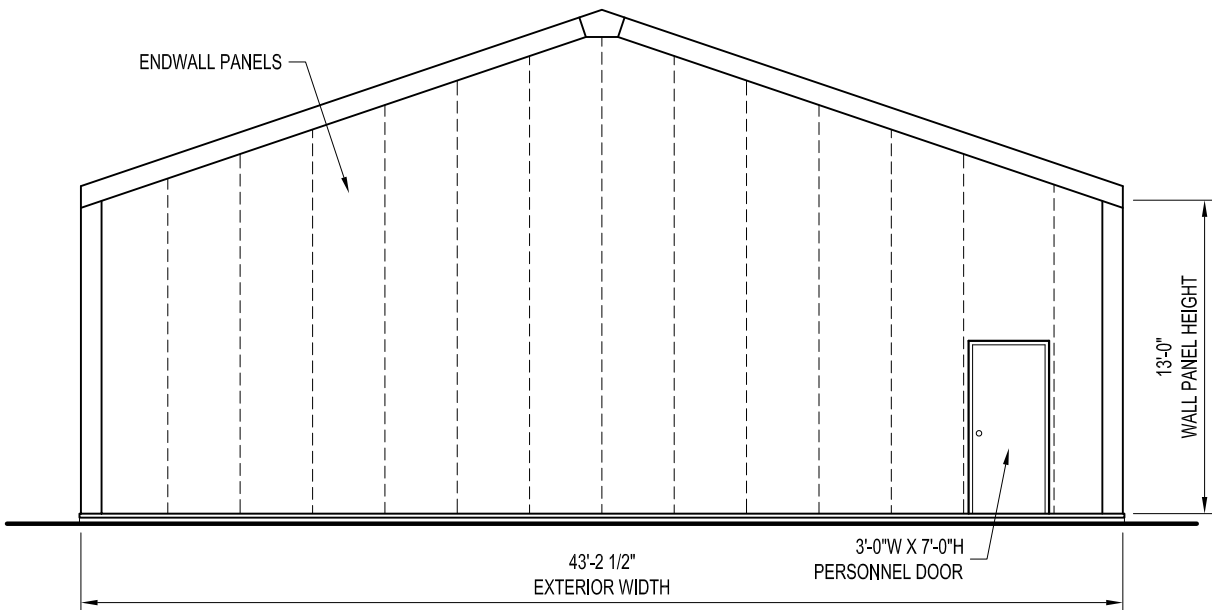
THIS DRAWING & THE DESIGN IT COVERS ARE THE EXCLUSIVE PROPERTY OF KELLY GROUP, INC. NO PART OF THIS DRAWING OR DESIGN MAY BE REPRODUCED OR TRANSMITTED IN ANY FORM OR BY ANY MEANS, ELECTRONIC OR MECHANICAL, INCLUDING PHOTOCOPYING, RECORDING, OR BY ANY INFORMATION STORAGE AND RETRIEVAL SYSTEM, WITHOUT THE WRITTEN PERMISSION OF KELLY GROUP, INC. THE USER OF THIS DRAWING SHALL BE RESPONSIBLE FOR OBTAINING ALL NECESSARY PERMITS AND APPROVALS FROM THE APPROPRIATE AGENCIES. KELLY GROUP, INC. IS NOT RESPONSIBLE FOR ANY DAMAGE TO PERSONS OR PROPERTY CAUSED BY THE USE OF THIS DRAWING.



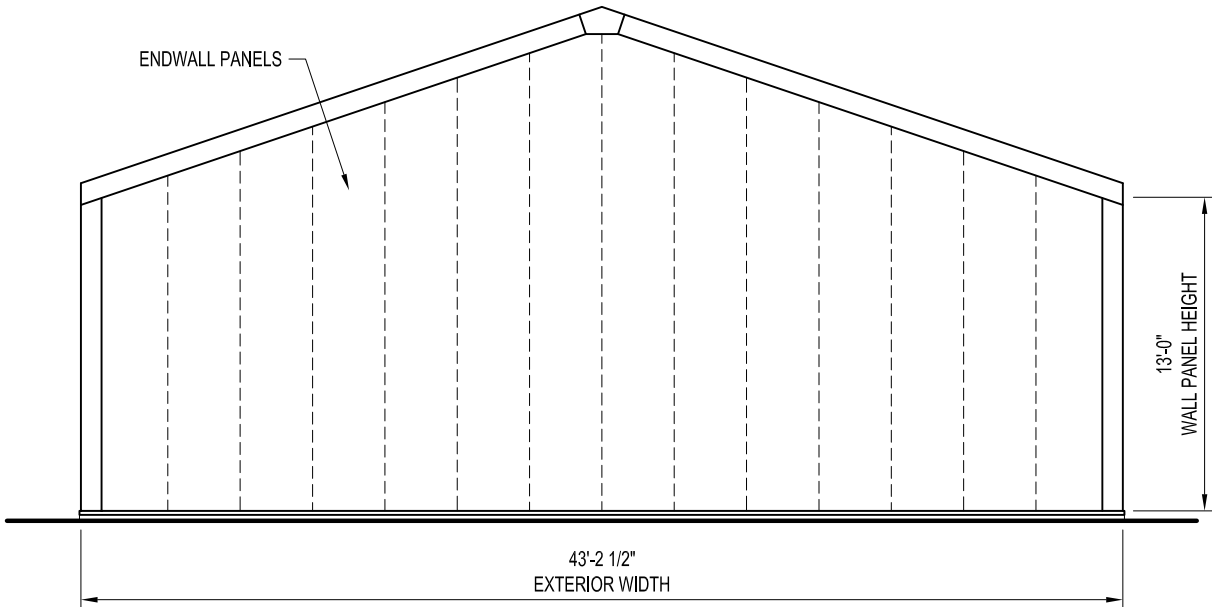
LEFT ELEVATION



RIGHT ELEVATION



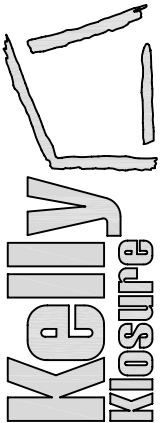
FRONT ELEVATION



BACK ELEVATION

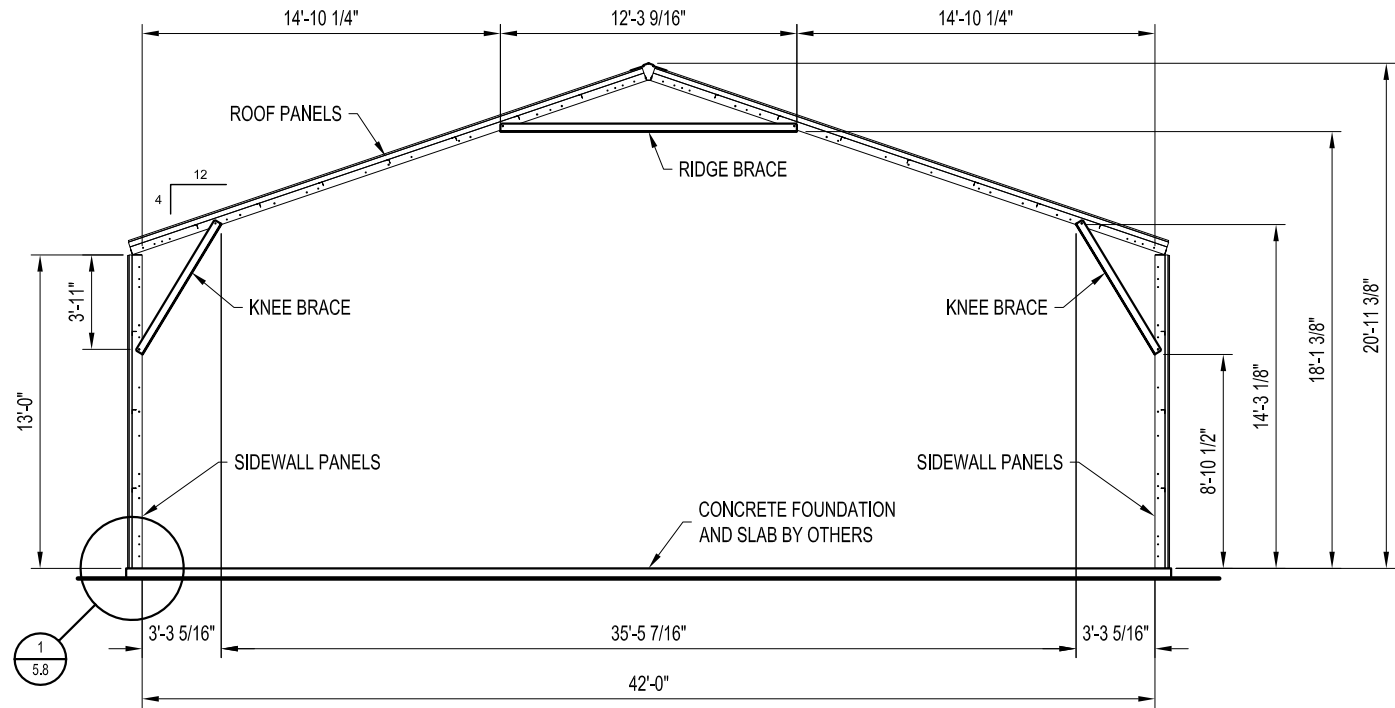
NOT FOR CONSTRUCTION

DRAWN BY: ALEX CARSTENS		PROJECT TITLE: 42'W X 13'H EAVE X 42'L P/N: KK424213		PAGE TITLE: ELEVATIONS	
DATE: 1/24/11	APPROVED BY: DATE:	BUYER:		SHEET 4 OF 8	
REVISION: DATE:	SCALE: 1/8" = 1'-0"	K.K. ORDER NUMBER:		PROPRIETARY INFORMATION	
K.K. QUOTE NUMBER:		BUYER P.O. NUMBER:		THIS DRAWING & THE DESIGN IT COVERS ARE THE EXCLUSIVE PROPERTY OF KELLY GROUP, INC. NO PART OF THIS DRAWING OR DESIGN MAY BE REPRODUCED OR TRANSMITTED IN ANY FORM OR BY ANY MEANS, ELECTRONIC OR MECHANICAL, INCLUDING PHOTOCOPYING, RECORDING, OR BY ANY INFORMATION STORAGE AND RETRIEVAL SYSTEM, WITHOUT THE WRITTEN PERMISSION OF KELLY GROUP, INC. OR ITS AGENTS. ANY UNAUTHORIZED USE OF THIS DRAWING OR DESIGN MAY BE SUBJECT TO LEGAL ACTION. KELLY GROUP, INC. IS NOT RESPONSIBLE FOR ANY DAMAGE OR LOSS OF ANY KIND, INCLUDING BUT NOT LIMITED TO, DIRECT, INDIRECT, INCIDENTAL, OR CONSEQUENTIAL DAMAGES, ARISING OUT OF THE USE OF THIS DRAWING OR DESIGN.	

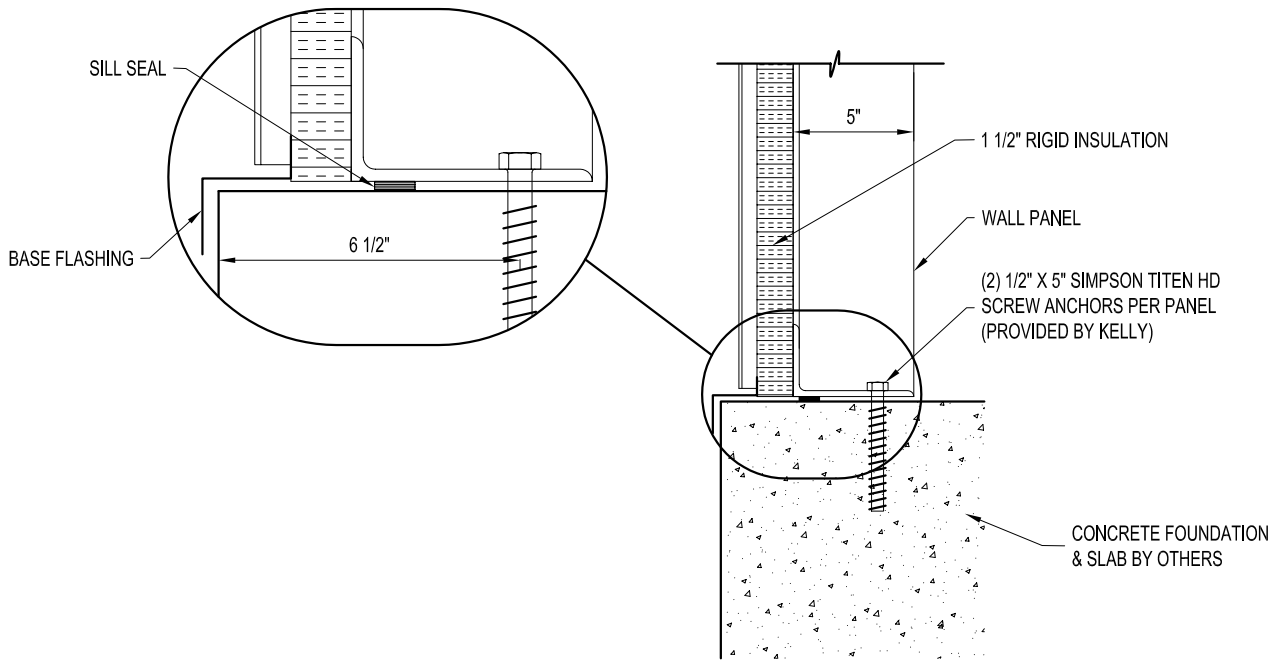


EASY TO ASSEMBLE PANEL  
SYSTEMS FOR RELOCATABLE  
ENCLOSURES FROM WEATHER  
BARRIERS TO BUILDINGS

Mfr. by Kelly Group, Inc.  
P.O. Box 1058 Fremont, NE 68026  
Phone: 800-228-7230 Fax: 402-727-1363 Web: [www.kellyklosure.com](http://www.kellyklosure.com)



CROSS-SECTION  
(42'W X 13'-0"H)

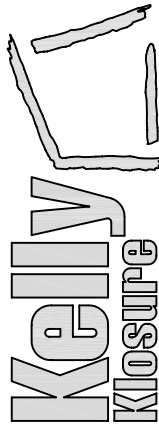


PANEL BASE SECTION  
SCALE: 1 1/2" = 1'-0"

NOT FOR CONSTRUCTION

DRAWN BY: ALEX CARSTENS	PROJECT TITLE: 42'W X 13'H EAVE X 42'L P/N: KK424213			PAGE TITLE: CROSS-SECTION	
	DATE: 1/24/11	APPROVED BY: DATE:	REVISION: DATE:	SHEET 5 OF 8	
SCALE: 1/8" = 1'-0"		BUYER: K.K. ORDER NUMBER:		PROPRIETARY INFORMATION THIS DRAWING & THE DESIGN IT COVERS ARE THE EXCLUSIVE PROPERTY OF KELLY GROUP, INC. NO PART OF THIS DRAWING OR THE DESIGN IT COVERS MAY BE REPRODUCED OR TRANSMITTED IN ANY FORM OR BY ANY MEANS, ELECTRONIC OR MECHANICAL, INCLUDING PHOTOCOPYING, RECORDING, OR BY ANY INFORMATION STORAGE AND RETRIEVAL SYSTEM, WITHOUT THE WRITTEN PERMISSION OF KELLY GROUP, INC. OR ITS AGENTS. THE USER OF THIS DRAWING OR THE DESIGN IT COVERS SHALL BE RESPONSIBLE FOR OBTAINING ALL NECESSARY PERMITS AND APPROVALS FROM THE APPROPRIATE AUTHORITIES. KELLY GROUP, INC. AND ITS AGENTS MAKE NO REPRESENTATION REGARDING THE SCALE OF THIS DRAWING.	
K.K. QUOTE NUMBER:		BUYER P.O. NUMBER:			

EASY TO ASSEMBLE PANEL  
SYSTEMS FOR RELOCATABLE  
ENCLOSURES FROM WEATHER  
BARRIERS TO BUILDINGS

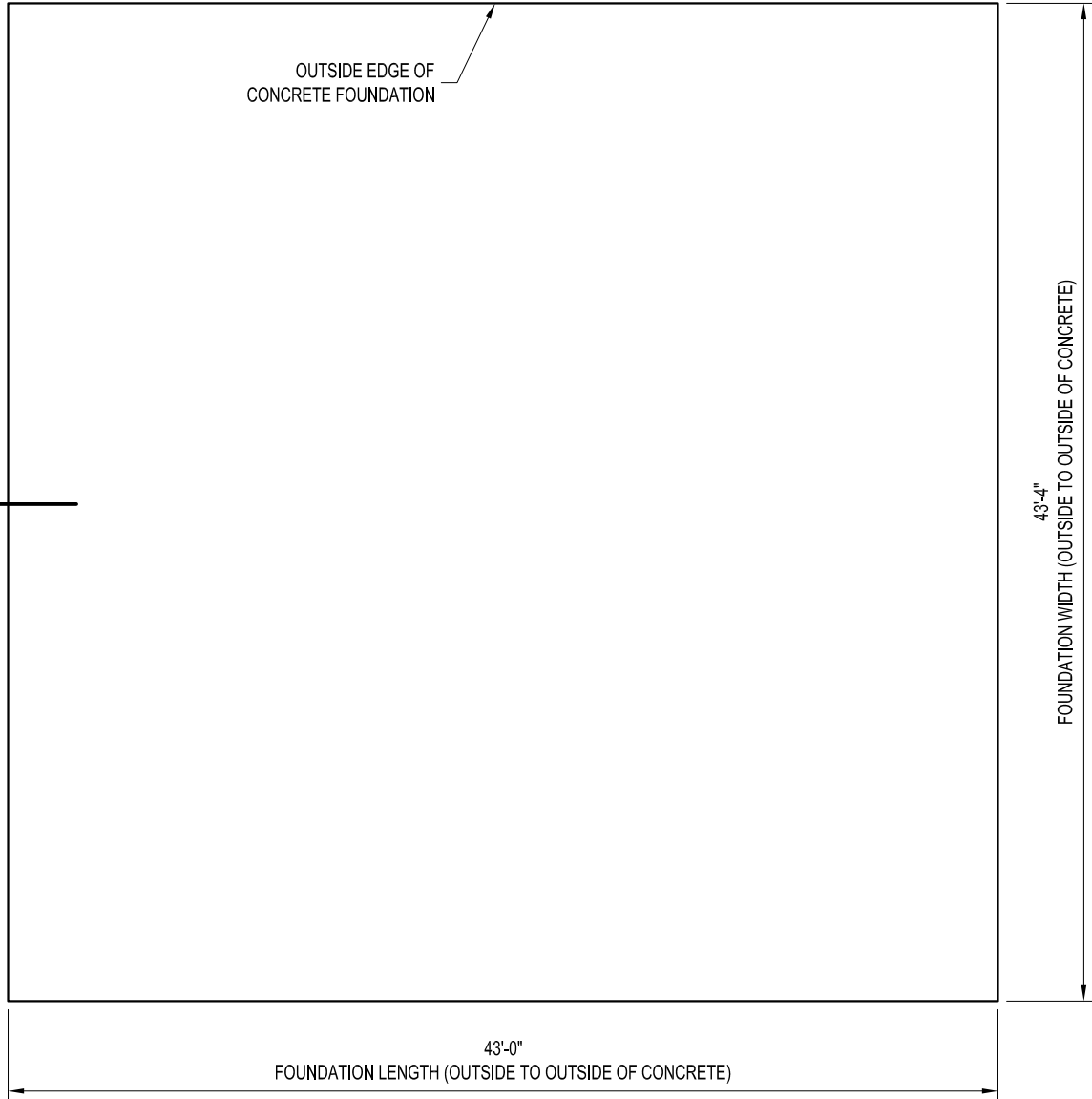
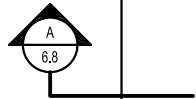
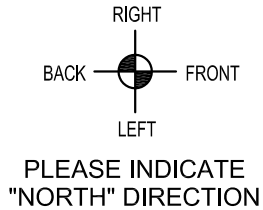


Mfr. by Kelly Group, Inc.

P.O. Box 1058 Fremont, NE 68026

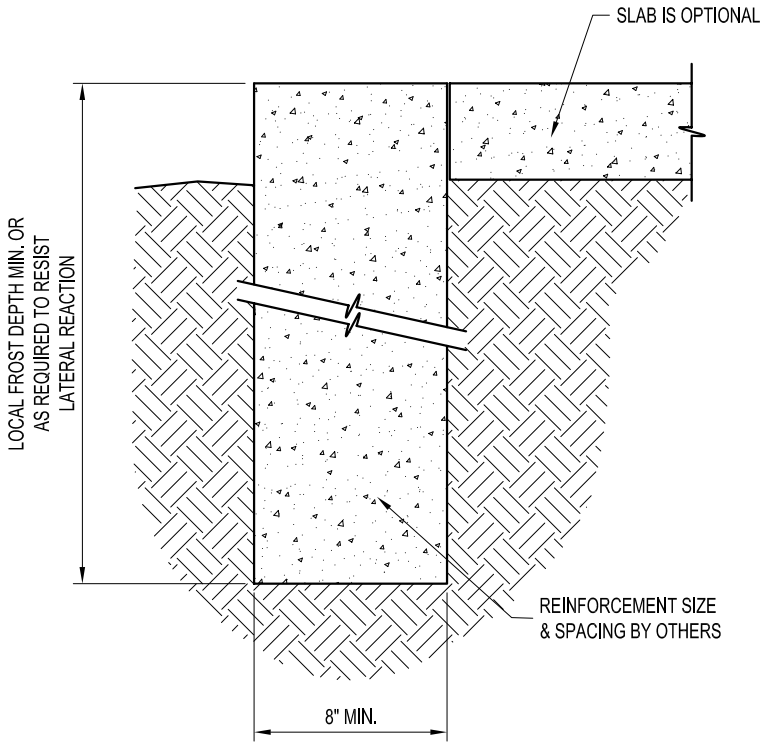
Phone: 800-228-7230 Fax: 402-727-1363

Web: [www.kellyklosure.com](http://www.kellyklosure.com)

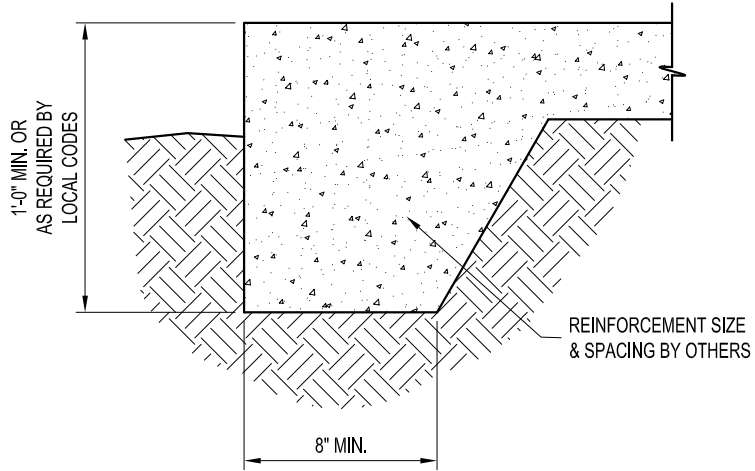


FOUNDATION PLAN VIEW

NOTE:  
THE FOUNDATION SIZE SHOWN IS  
THE MINIMUM RECOMMENDED SIZE  
TO PREVENT WATER LEAKAGE.



TRENCH FOOTING OPTION

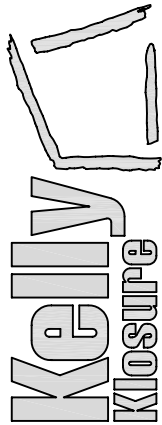


THICKENED EDGE SLAB OPTION

NOT FOR CONSTRUCTION

DRAWN BY: ALEX CARSTENS	PROJECT TITLE: 42"W X 13"H EAVE X 42"L P/N: KK424213		PAGE TITLE: FOUNDATION PLAN VIEW	
	DATE: 1/24/11	APPROVED BY: DATE:	SHEET 6 OF 8	
REVISION: DATE:	BUYER:		PROPRIETARY INFORMATION	
SCALE: 1/8" = 1'-0"	K.K. ORDER NUMBER:		THIS DRAWING & THE DESIGN IT COVERS ARE THE EXCLUSIVE PROPERTY OF KELLY GROUP, INC. OF NEW HAMPSHIRE. NO PART OF THIS DRAWING OR DESIGN MAY BE REPRODUCED, COPIED, OR TRANSMITTED IN ANY FORM OR BY ANY MEANS, ELECTRONIC OR MECHANICAL, INCLUDING PHOTOCOPYING, RECORDING, OR BY ANY INFORMATION STORAGE AND RETRIEVAL SYSTEM, WITHOUT THE WRITTEN PERMISSION OF KELLY GROUP, INC. OF NEW HAMPSHIRE. ANY REUSE OF THIS DRAWING OR DESIGN IN ANY FORM OR BY ANY MEANS, ELECTRONIC OR MECHANICAL, INCLUDING PHOTOCOPYING, RECORDING, OR BY ANY INFORMATION STORAGE AND RETRIEVAL SYSTEM, WITHOUT THE WRITTEN PERMISSION OF KELLY GROUP, INC. OF NEW HAMPSHIRE, IS STRICTLY PROHIBITED.	
K.K. QUOTE NUMBER:	BUYER P.O. NUMBER:		Mfr. by Kelly Group, Inc. P.O. Box 1058 Fremont, NE 68026 Phone: 800-228-7230 Fax: 402-727-1363 Web: www.kellyklosure.com	

EASY TO ASSEMBLE PANEL  
SYSTEMS FOR RELOCATABLE  
ENCLOSURES FROM WEATHER  
BARRIERS TO BUILDINGS



## 1) BUILDING STRUCTURE

A) BUILDING STRUCTURAL DESIGN CRITERIA

- |    |                     |  |
|----|---------------------|--|
| a) | BUILDING CODE:      | 2006 IBC                                 |
| b) | ROOF LOAD:          | 40 PSF (GROUND SNOW LOAD)                |
| c) | SNOW DRIFT LOAD:    | NONE                                     |
| d) | WIND LOAD:          | 100 MPH (3 SECOND GUST)                  |
| e) | SEISMIC:            | DESIGN CATEGORY "C", SOIL SITE CLASS "D" |
| f) | OCCUPANCY CATEGORY: | 2  |

- B) THIS BUILDING HAS BEEN DESIGNED IN ACCORDANCE WITH THE BUILDING CODE AND BASIC STRUCTURAL DESIGN DATA LISTED ABOVE. THE BUILDING HAS BEEN DESIGNED AND ENGINEERED FROM A STRUCTURAL ASPECT ONLY. OTHER CODE COMPLIANCE ISSUES SUCH AS OCCUPANCY, EGRESS, HVAC, ELECTRICAL, MECHANICAL, FIRE SAFETY ETC. IS THE RESPONSIBILITY OF THE END USER OR ITS REPRESENTATIVES. MATERIAL SPECIFICATIONS ARE AVAILABLE UPON REQUEST.

- C) ANY REQUIRED "MAJOR PENETRATIONS" THROUGH THE WALLS OR ROOF OF THE BUILDING SHOULD BE NOTED AND LOCATED BEFORE RELEASE FOR MANUFACTURING IS GIVEN. THIS WILL ALLOW KELLY TO MODIFY FRAMING AS NECESSARY. FIELD CUTTING OF ANY STEEL FRAMING MEMBERS IS NOT RECOMMENDED AND WILL VOID THE STRUCTURAL DESIGN CRITERIA AND ANY WARRANTIES. "MAJOR PENETRATIONS" ARE ITEMS LIKE HVAC DUCTS AND LARGE PIPES OR CONDUITS.

- D) IF PERMITS ARE TO BE PULLED FOR THIS PROJECT, KELLY KLOSURE RECOMMENDS THAT THIS BE DONE BEFORE BUILDING IS RELEASED FOR MANUFACTURING. ANY INSPECTIONS REQUIRED FOR PERMITS ARE THE RESPONSIBILITY OF THE END USER OR ITS REPRESENTATIVES.

IMPORTANT NOTE: ANY AND ALL CHANGES, MODIFICATIONS OR RETROFITS REQUIRED DUE TO PERMITS BEING PULLED AFTER THE BUILDING IS MANUFACTURED ARE NOT KELLY'S RESPONSIBILITY.

## 2) FOUNDATIONS

A) RECOMMENDED FOUNDATION SIZE IS GIVEN ON THE FOUNDATION PLAN VIEW PAGE OF THIS SET.

- a) OUTSIDE DIMENSIONS AS SHOWN ARE REQUIRED TO ACCEPT BUILDING BASE FLASHING AS SUPPLIED. A TOLERANCE OF + OR - 1/4" IS ACCEPTABLE. THE SLAB SHOULD BE LEVEL AROUND PERIMETER OF FOUNDATION WITH A TOLERANCE OF + OR - 1/4". ANY VARIANCE COULD CREATE A LEAKAGE PROBLEM AT BASE OF BUILDING.

- b) IF THE BUILDING IS TO BE PLACED ON A LARGER FOUNDATION THAN SHOWN, SPECIAL BASE FLASHING CAN BE SUPPLIED UPON REQUEST.

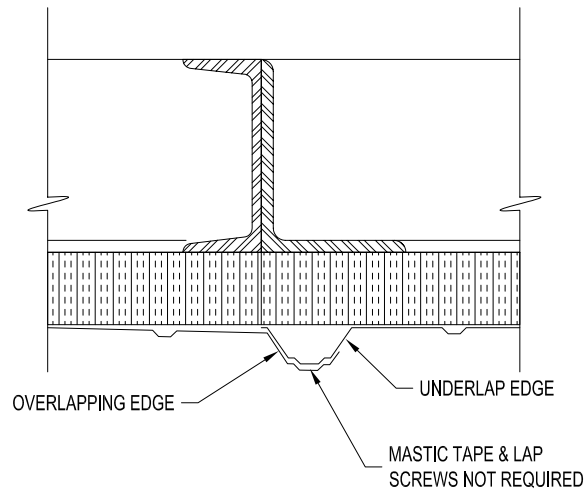
- c) USERS ARE TO ESTABLISH SIZE AND REINFORCEMENT REQUIREMENTS FOR FOUNDATIONS TO ACCOMMODATE SITE SOIL CONDITIONS AND LOCAL FROST DEPTH.

- d) BUILDING ANCHOR BOLT REACTIONS ARE AVAILABLE UPON REQUEST.

B) ANCHOR BOLTS

- a) PRESETTING OF ANCHOR BOLTS IS NOT REQUIRED. ANCHOR BOLTS WILL BE INSTALLED AS THE BUILDING IS ERECTED. KELLY RECOMMENDS THE *SIMPSON TITEN HD SCREW ANCHOR* AS SHOWN ON THE BUILDING BASE SECTION ON THE CROSS-SECTION PAGE.

- b) CONCRETE ANCHORS WILL BE SUPPLIED WITH THE BUILDING SHIPMENT.



## OVERLAP DETAIL

3) PANEL COMPONENTS AND FINISHES (SEE PANEL COMPONENTS ISOMETRIC)

A) PANEL FRAMES & STRUCTURAL STEEL COMPONENTS

- a) ONE COAT, CORROSION RESISTANT, WATER REDUCIBLE, ACRYLIC ALKYD EMULSION PRIMER

B) EXTERIOR STEEL SIDING AND ROOFING

- a) 26 GA. 3/4" RIBBED "IMPERIAL RIB", DOES NOT REQUIRE SEAL TAPE OR STITCH SCREWS AT OVERLAPS
- b) SIDING AND ROOFING TO BE GALVALUME COATED WITH PRIMER AND SILICONE MODIFIED POLYESTER PAINT FINISH

C) FACTORY INSTALLED INSULATION

- a) INSULATION TO BE RIGID, CLOSED CELL, POLYISOCYANURATE WITH FOIL FACING
- b) WALLS: 1.1/2" THICK (R-11)
- c) ROOF: 2.1/2" THICK (R-19)

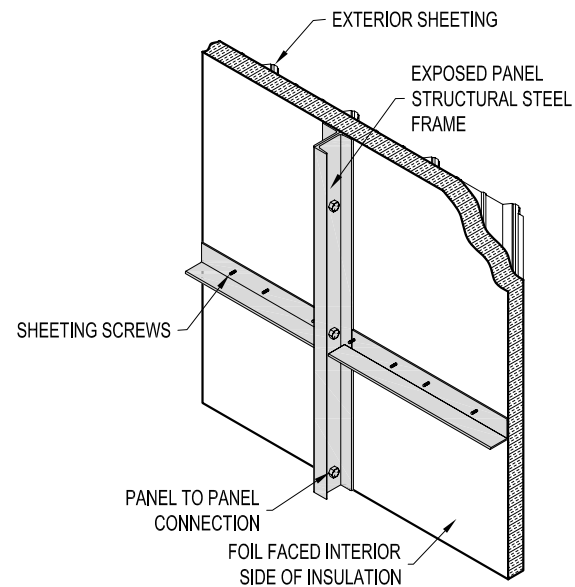
D) FACTORY INSTALLED STEEL INSULATION LINER

- a) 28 GA. G-90 GALVANIZED STEEL  
b) INSTALLED IN WALLS ONLY

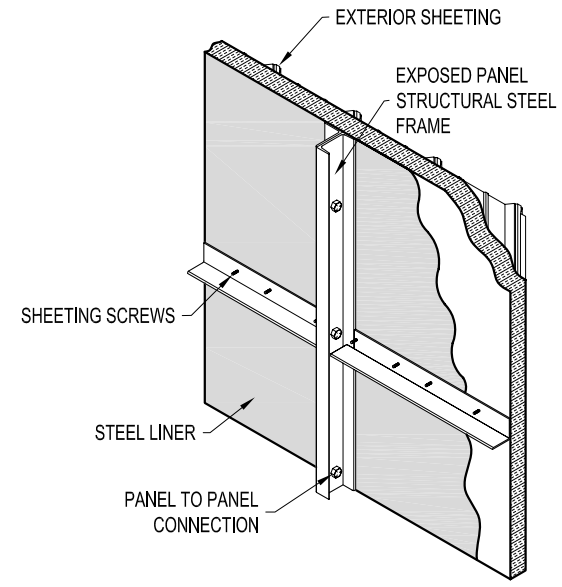
#### 4) PERSONNEL AND EQUIPMENT DOORS

A) 3'W X 7'H PERSONNEL DOOR FACTORY INSTALLED IN A 3'-9" WIDE WALL PANEL,  
TYPE "A" SHOWN ON PLAN VIEW

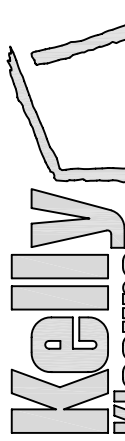
- |    |                    |  |
|----|--------------------|--|
| a) | DOOR FRAME:        | 16 GA. STEEL, PRIMED AND FINISH PAINTED                  |
| b) | DOOR LEAF:         | 18 GA. STEEL, HONEYCOMB CORE, PRIMED AND FINISH PAINTED  |
| c) | *ENTRY LOCK:       | STANDARD LOCKSET, S.PARKER B9160 SERIES, STAINLESS STEEL |
| d) | HINGES:            | (3) 4.5" BALL BEARING, STANLEY FBB179, US26D FINISH      |
| e) | *CLOSER:           | STANDARD, S.PARKER 954, ALUMINUM FINISH                  |
| f) | DOOR SWEEP:        | STANDARD, MD DCV134, ALUMINUM FINISH                     |
| g) | WEATHER STRIPPING: | NONE   |



## ROOF PANEL ISOMETRIC



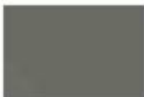




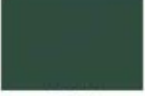











## WALL PANEL ISOMETRIC

DRAWN BY: ALEX CARSTENS		PROJECT TITLE: 42"W X 13"H EAVE X 42"L P/N: KK424213		PAGE TITLE:  BUILDING NOTES & PANEL ISOMETRIC  SHEET 7 OF 8		EASY TO ASSEMBLE PANEL SYSTEMS FOR RELOCATABLE ENCLOSURES FROM WEATHER BARRIERS TO BUILDINGS
DATE: 1/24/11						
APPROVED BY:						
DATE:						
REVISION:						
DATE:		BUYER:				
SCALE: NOT TO SCALE		K.K. ORDER NUMBER:		BUYER P.O. NUMBER:		
K.K. QUOTE NUMBER:						
Mfrg. by Kelly Group, Inc. P.O. Box 1058 Fremont, NE 68026 Phone: 800-228-7230 Fax: 402-727-1363 Web: www.kellyklosure.com						

26 GAUGE - PAINTED "IMPERIAL RIB" PROFILE  
EXTERIOR SHEETING & TRIM COLOR AVAILABILITY CHART

THIS CHART SHOULD BE USED IF YOUR QUOTE OR BUDGET ESTIMATE CALLS OUT  
"26 GAUGE PAINTED IMPERIAL RIB" EXTERIOR SHEETING AND TRIM.

AVAILABLE AS TRIM ONLY		AVAILABLE AS TRIM & SHEETING		AVAILABLE AS SHEETING ONLY	
	POLAR WHITE		ASH GRAY		CHARCOAL GRAY
	DESERT SAND		BURNISHED SLATE		LIGHT STONE
	GALLERY BLUE		FERN GREEN		KOKO BROWN
	HAWAIIAN BLUE		COLONY GREEN		GRAY
	AZTEC GOLD		CRIMSON RED		SADDLE TAN
					RUSTIC RED
					IVY GREEN

METAL COLOR CHIPS ARE AVAILABLE UPON REQUEST.

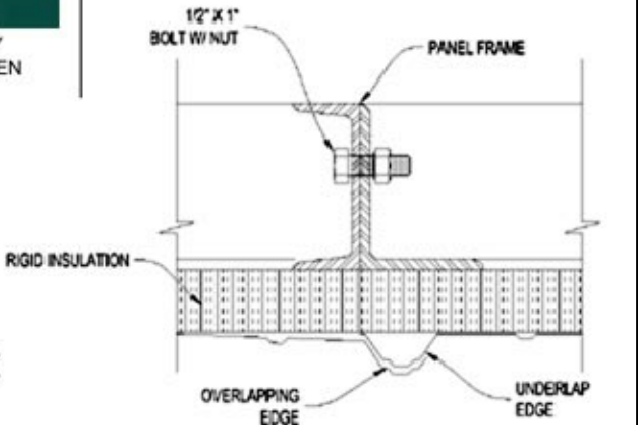
ALL COLORS SHOWN ON THIS CHART ARE A 26 GAUGE  
GALVALUME COATED BASE METAL WITH SILICONE  
POLYESTER COLOR COAT.

PLAIN GALVALUME FINISH IS AVAILABLE UPON REQUEST.

PLAIN GALVANIZED FINISH IS AVAILABLE FOR MORE  
ECONOMICAL APPLICATIONS.

ALL COLORS SHOWN HAVE A 30 YEAR LIMITED WARRANTY  
EXCEPT "CRIMSON RED" WHICH HAS A 3-YEAR WARRANTY  
ON ROOF PANELS AND A 5-YEAR WARRANTY ON WALL  
PANELS. (WARRANTY INFORMATION AVAILABLE UPON  
REQUEST).

ALL COLORS SHOWN CONTAIN NOT MORE THAN .06%  
LEAD EXCEPT "CRIMSON RED". USE THIS COLOR FOR  
APPLICATIONS WHICH COMPLY WITH FEDERAL, STATE  
AND LOCAL REGULATIONS FOR LEAD BASED PAINT.



TYPICAL OVERLAP DETAIL

MASTIC TAPE AND LAP SCREWS NOT REQUIRED  
FOR "IMPERIAL RIB" PROFILE SHEETING OVERLAPS.

NOT FOR CONSTRUCTION

COLOR SCHEDULE

CHOOSE COLORS ACCORDING TO CHARTS LOCATED AT:  
<http://www.kellyklosure.com/resource>  
CLICK ON:

"26 GAUGE PAINTED IMPERIAL RIB PROFILE COLOR CHART"	
ITEM	COLOR OR FINISH REQUESTED
ROOF SHEETING & RIDGE CAP	
WALL SHEETING & BASE FLASHING	
VERTICAL CORNER FLASHING	
EAVE & GABLE FLASHING	
PERS. & EQUIPMENT DOOR TRIM	
PERSONNEL DOORS	GRAY
INTERIOR LINER	GALVANIZED STEEL (WALLS ONLY)
EXPOSED INTERIOR STRUCTURAL STEEL	STANDARD RED PRIMER

INSTRUCTIONS FOR OPTIONAL DOORS & ACCESSORY LOCATIONS

EQUIPMENT DOOR PLACEMENT & SIZE RESTRICTIONS:

THE OPTIONAL EQUIPMENT DOOR MUST BE PLACED IN ONE OF THE END WALLS WITH AT LEAST ONE FULL PANEL OPEN ON BOTH SIDES. THE DOOR WILL NEED AT LEAST 2'-6" CLEAR ABOVE FOR THE MANUAL OR ELECTRIC OPERATOR.

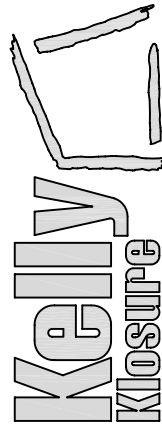
3'-0"W PERSONNEL DOOR PLACEMENT RESTRICTIONS:

PERSONNEL DOORS WILL BE PLACED IN 3'-9" PANELS WITH A 2'-3" PANEL BESIDE THEM. THE DOORS CANNOT BE PLACED ON THE END PANEL OF ANY WALL.

5'-8"W DOUBLE DOOR PLACEMENT RESTRICTIONS:

DOUBLE DOORS WILL BE PLACED IN 6'-0" PANELS. THE DOORS CANNOT BE PLACED ON THE END PANEL OF ANY WALL.

EASY TO ASSEMBLE PANEL  
SYSTEMS FOR RELOCATABLE  
ENCLOSURES FROM WEATHER  
BARRIERS TO BUILDINGS



Mfr. by Kelly Group, Inc.

P.O. Box 1058 Fremont, NE 68026

Phone: 800-228-7230 Fax: 402-727-1363

Web: [www.kellyklosure.com](http://www.kellyklosure.com)

COLOR SCHEDULE  
& NOTES

SHEET 8 OF 8

PROPRIETARY INFORMATION

THIS DRAWING & THE DESIGN IT COVERS ARE THE EXCLUSIVE PROPERTY OF KELLY GROUP, INC. NO PART OF THIS DRAWING OR DESIGN MAY BE REPRODUCED OR TRANSMITTED IN ANY FORM OR BY ANY MEANS, ELECTRONIC OR MECHANICAL, INCLUDING PHOTOCOPYING, RECORDING, OR BY ANY INFORMATION STORAGE AND RETRIEVAL SYSTEM, WITHOUT THE WRITTEN PERMISSION OF KELLY GROUP, INC. THE USER OF THIS DRAWING OR DESIGN AGREES TO HOLD KELLY GROUP, INC. HARMLESS FROM AND AGAINST ALL SUCH REPRODUCTION OR TRANSMISSION. KELLY GROUP, INC. IS NOT RESPONSIBLE FOR ANY REVISIONS OR CHANGES TO THIS DRAWING OR DESIGN.

PROJECT TITLE:

42"W X 13'H EAVE X 42'L  
P/N: KK424213

DRAWN BY:  
ALEX CARSTENS

DATE:  
1/24/11

APPROVED BY:

DATE:

REVISION:

DATE:

SCALE:  
3/16" = 1'-0"

KK QUOTE NUMBER:

BUYER:

K.K. ORDER NUMBER:

BUYER P.O. NUMBER: